

# Designer<sup>MT</sup>

mark@designermt.co.uk  
07743442151

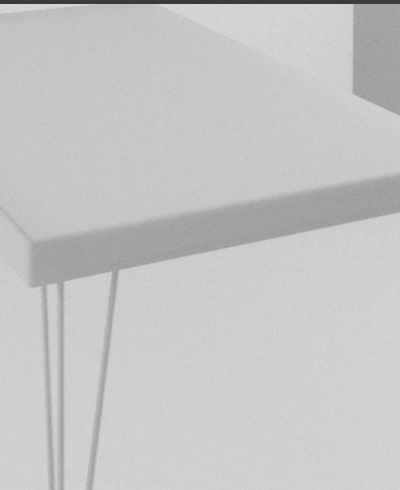


**Professional 3D Visualisation Artist**  
Bringing your architectural designs to life

Brochure



# A little more about how I can help...



## Get a feel for your space

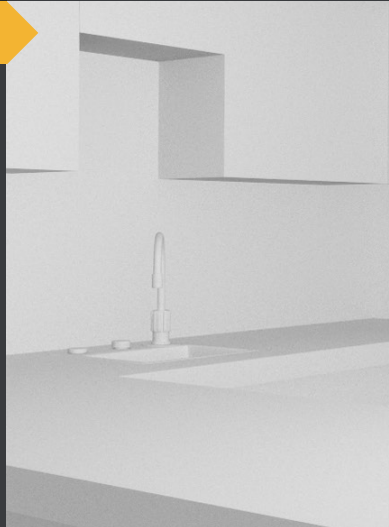
By using key furniture (i.e. sofa, table, chairs, bed), you can gain a real understanding of scale.

- Where is the best place for the sofa?
- Is the dining table the right size?
- Can you buy that dream bed after all?

Plan ahead and make your room more comfortable. A great way to see if your furniture works in your new living areas

## View your kitchen layout

If you're like me, the idea of a new kitchen is the most exciting and yet daunting part of any building project. Gaining an idea of the work-zones and general flow of the kitchen can provide insight, inspiration and confidence to make your choices. It helped us determine if we had the space for a Rangemaster *and* a pull-out larder.



## Make it your own style

Pinterest is such a useful tool for ideas, from helping with your choice of flooring, to that tempting 'midnight' blue or 'emerald' green bedroom colour scheme. Put your own mark on your project by choosing the colour and material finishes. This will give you a great idea of what you can do with, and what will work in your new space.

Share your Pinterest ideas, as we work on getting your perfect finish

## External images

Being able to see the new extension, using 3D still images and Augmented Reality (AR) we couldn't believe we were looking at the same house! Armed with a choice of styles and finishes, provide ideas and insight which allows you to share your vision with builders and organisations engaged on your build!

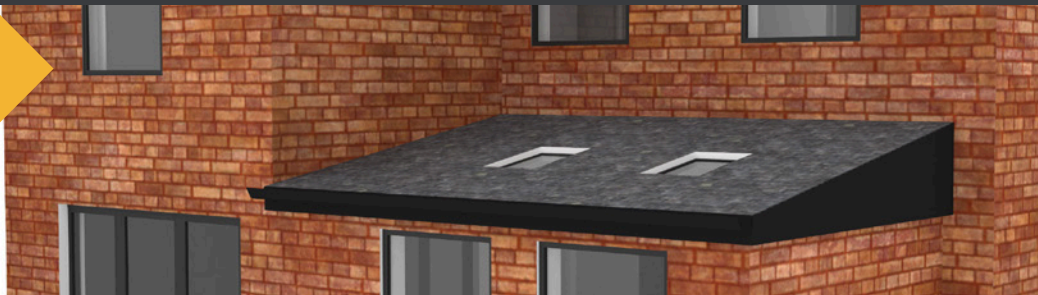


# Internal plan



				Packages	
	Feature	What's included	Individual Price	<i>Designer</i> Gold £200	<i>Bespoke</i> Platinum £POA
Development Stage 1	Size guide layout - clean white room	Up to 2 rooms and up to 2 images (different angles) per room. Clean white with up to 4 key furnishings	£120		
	Bespoke layout - colour room	Any key furnishings requested up to a complete design to customer requirements. Any colours and textures required can be included (good texture samples required)	£POA		
Development Stage 2	VR clean white room	Internal design layout in clean white. Viewable in VR (suitable for Google Cardboard). For a VR image to be created, a Size guide layout will be included	£190 (including size guide layout)		
	VR bespoke room	Bespoke internal design layout in full colour, textured. Viewable in VR (suitable for Google Cardboard). For a VR image to be created, a Bespoke layout will be included	£POA (including bespoke layout)		

# External plan



				Packages	
	Feature	What's included	Individual Price	<i>Designer</i> Gold	<i>Bespoke</i> Platinum
Development Stage 1	Essential layout - clean white	External plan in clean white finish. 2 images per plan	£90		
	Bespoke layout - Colour	Complete external layout, in full colour and textured based on planned design. 2 images per plan	£120		
Development Stage 2	AR white	External design layout clean white. Viewable in AR*. Scaled to fit a 75cm square when displayed For an AR model to be created, an Essential layout will be included	£130 (including Essential layout)		
	AR bespoke	External design layout full colour. Viewable in AR*. Scaled to fit a 75cm square when displayed For an AR model to be created, a Bespoke layout will be included	£160 (including Bespoke layout)		

Due to the many colour, sizing and texture options available when creating a bespoke service project, each project will require a tailored quote.

Please contact me for further information. For a faster quote, fill out the requirements form and send this along with your enquiry.



## The Process

- Step 1:** Send me your architect's plans, and return the completed questionnaire along with any photos of the building, finishes and textures (for any bespoke services, a quote will be provided after I have received the questionnaire). 50% deposit to be paid.
- Step 2:** With up to 3 revisions to the original structural base design, together we will sign off any work completed for Development Stage 1.  
If any revision requires alterations to the architect's plans, I will need updated architectural drawings to proceed. For those having Development Stage 1 work only, final payment is due.
- Step 3:** Once ready to proceed to VR and AR (Development Stage 2), only tweaks to texture, colour, furniture positioning or adding external brickwork finishes etc. can be carried out (further costs may be incurred for complete redevelopment after this point). For those having Development Stage 2 work, final payment is due.

*All payments to be made by BACS.*

## Disclaimer

All images are supplied at screen resolution 72ppi. Higher resolution images are available up on request for an addition fee.

How a room is lit is based on the 3D visualisers creativity and does not represent the true light values from any of the fixtures and fittings.

Colours may vary between viewing devices. All efforts will be made to match a specific colour as closely as possible. Direct lighting (sunlight) in the scene and screen differences may result in a variation of colour.

VR Videos that are on YouTube will be kept private for customer viewing only. I may ask if these can be used for DesignerMT marketing/social media purposes. Clients will be unidentifiable from any images/videos used.

Furniture will be of customer's stated dimensions. A generic furniture equivalent model design will be used. I will keep as close to any reference images as possible - this may be a stock model.

The Internal and External designs are for visual use only. These are not made as purely accurate plan representations, rather to offer a feel for the layout/colour schemes and prospective plan.

Contact me on [mark@designermt.co.uk](mailto:mark@designermt.co.uk)  
or [07743 442151](tel:07743442151) if you have any questions

Privacy policy - see [www.designermt.co.uk/privacy](http://www.designermt.co.uk/privacy)